

Social Studies 7/8

www.ilovehistory.org

jlee@etusd.org

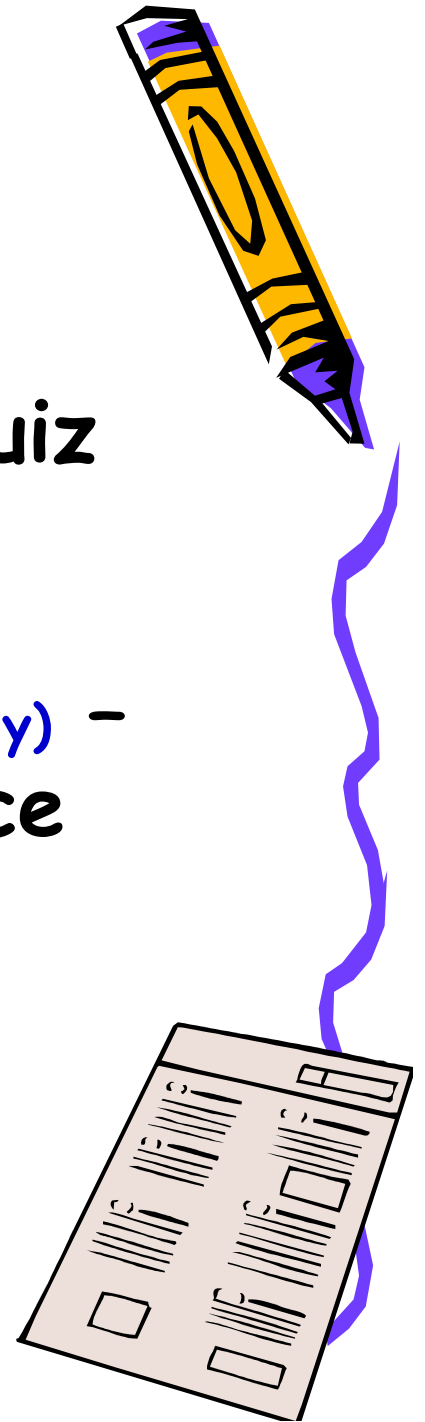
Mr. Lee

Room 16



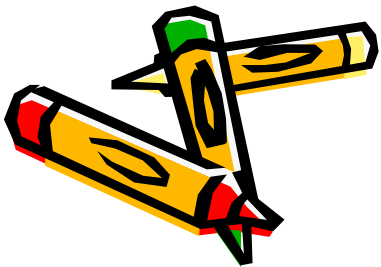
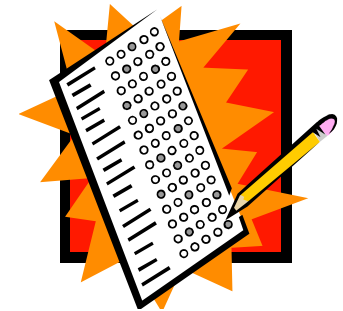
Assessment

- Quiz - open note/homework Quiz
 - Short Answers
 - All Textbook Work due on quiz day
- Quarterly Final Test (8th Grade Only) - fill in, matching, multiple choice
 - 75 Q's, 75 pts.
 - Study guide posted online



Assessment Contd.

- Homework
 - Worksheet, Textbook Work, Uncompleted Class Work, Concept Reinforcements, etc.
- Class Work
- Oral Presentations
- Class Discussions/Participations
- Projects



Missing/Late Work

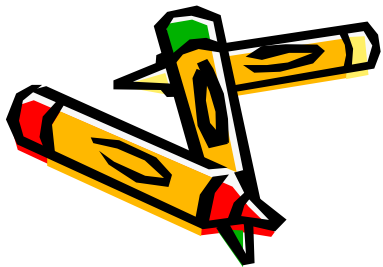


- Missing assignments due to excused absence must be made up immediately.
 - Absent 2 days = 2 days to make up
 - Student are responsible for finding out what they missed and turn in assignments
 - Check www.ilovehistory.org for class schedule
- Late Work Policy - must turn in all late work 1 day after the due date.
 - Late work will receive maximum of $\frac{1}{2}$ of original credit.



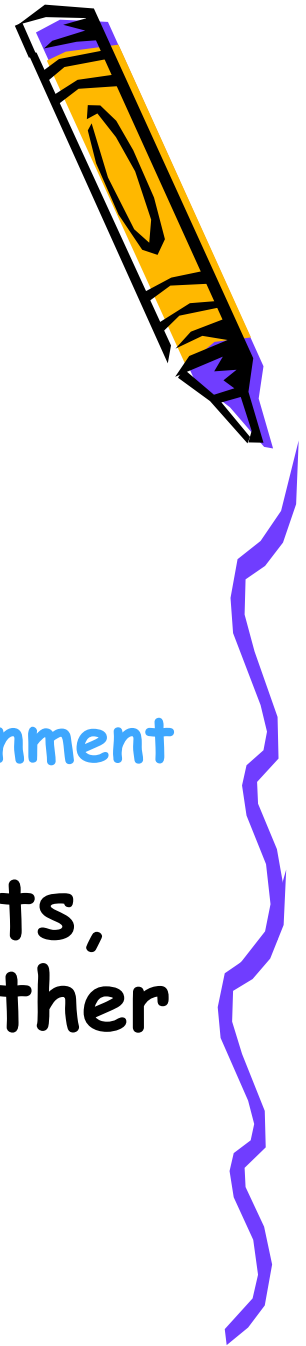
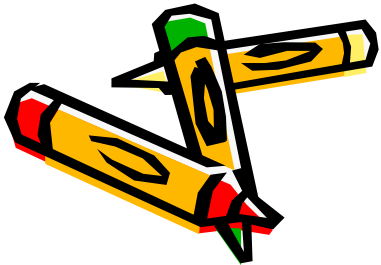
Grading Scale

- A 100 - 90
- B 89 - 80
- C 79 - 70
- D 69 - 60
- F 59 - 0



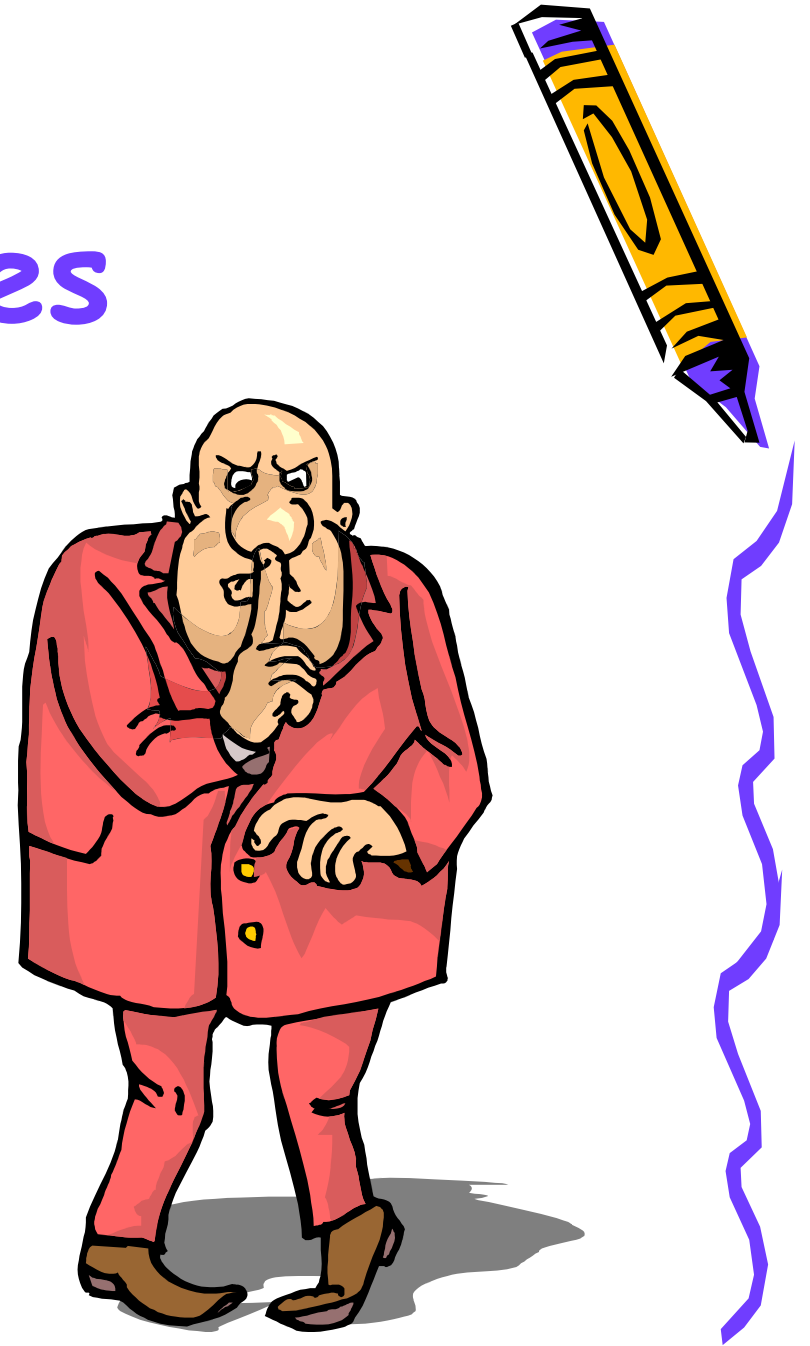
www.ilovehistory.org

- 2 Week Class Schedule
 - Updated Every 2 Weeks
- Check on Grade
 - Updated within 2-3 days after the assignment is turned in
- HW, Test/Quiz Date, Worksheets, Study Guide, Extra Credit and other Important Information



Class Rules

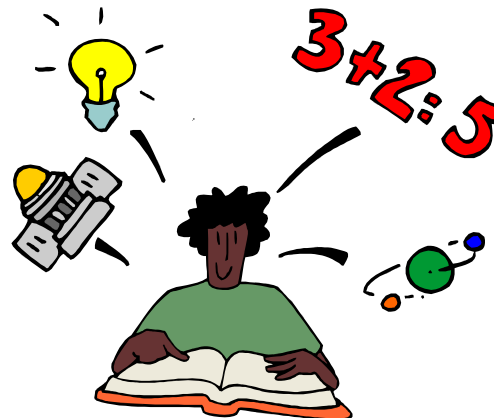
- Be Prepared
- Be Seated
- Be Polite
- Be Honest
- Be Quiet



Be Prepared

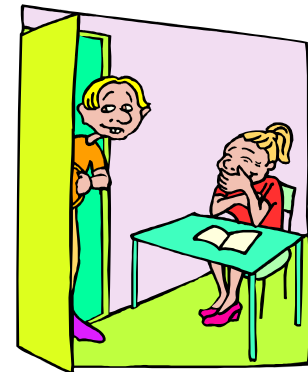


- Writing Materials
 - Blue/Black Pen, Pencil, Paper etc.
 - Coloring pencil, glue stick, Large Poster Size Paper
 - Be ready to start
- Daily Planner
- Textbook



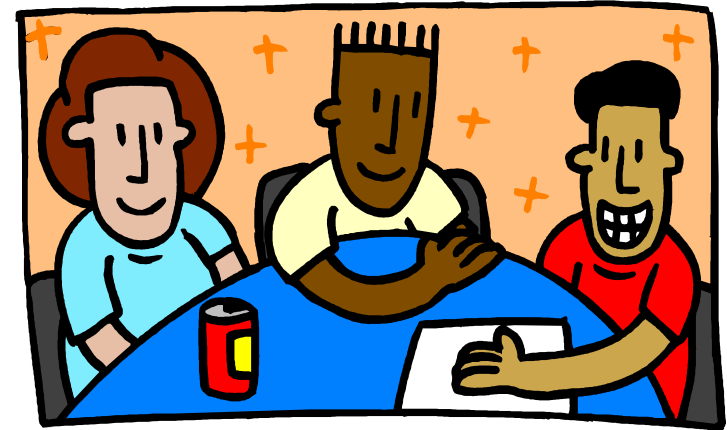
Be Seated

- Must be seated in your assigned seat prior to the tardy bell or will be marked at tardy even if you are in the classroom.
 - 3rd Tardy = S on Citizenship
 - 4th Tardy = U on Citizenship and a detention



Be Polite

- Be polite to others.
- Respect other people and their personal property.
- Raise your hand.



Be Honest

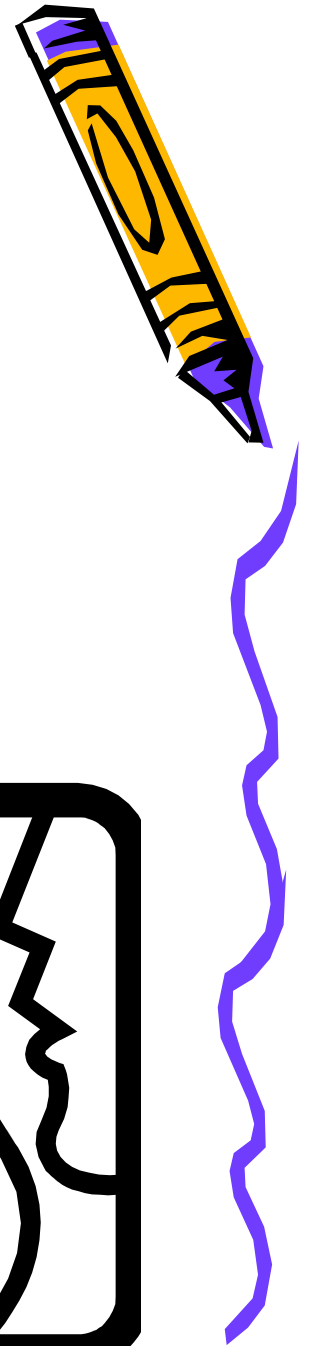


- Do Not Cheat or Share Work
 - No two same assignments will be accepted.
- DO Not Plagiarize
 - Everything must be written in your own words
- Bert Lynn Middle School Academic Dishonesty Policy will be strictly enforced.
 - Possible Consequences - F on the assignment/class, Parent Conference, Saturday School, Possible Removal from the class.



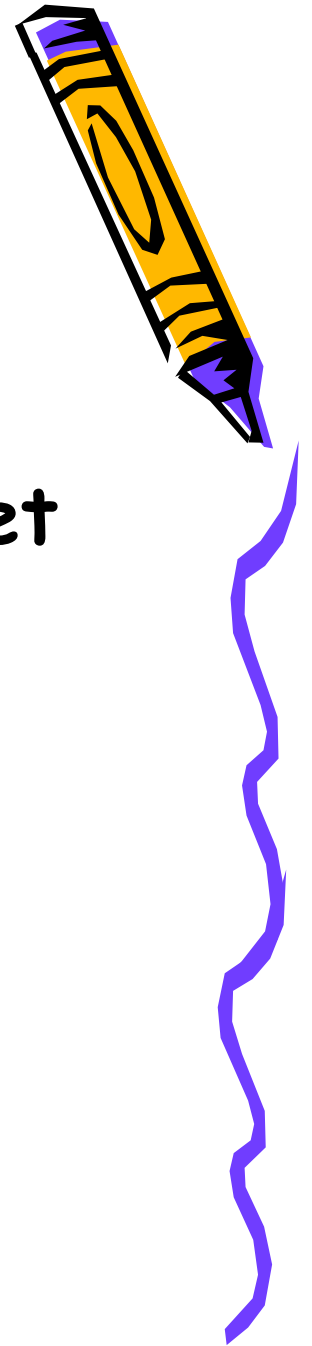
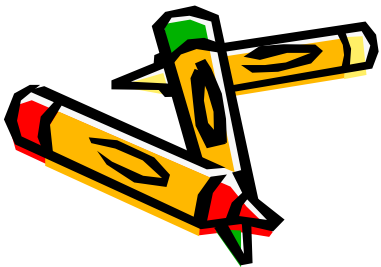
Be Quiet

- Be ready to start day's lesson.
- Raise hand, speak when acknowledged.
- Do not disturb/disrupt



Wish List

- Old Computers (PC/Notebook)
- Laser Ink Cartridges for HP Lasejet 5 si Nx
- Printer Paper
- Tissues
- Coloring Pencils
- Glue Sticks
- Large Poster Size Paper



Contact Information

- Web: www.ilovehistory.org
- E Mail: jlee@etusd.org
- Phone (310) 533-4495, X-8616

